

HOWREY ANGUS



Breeding bulls for grass farmers

GRAZER'S EDGE
online bull sale

DECEMBER 3-4, 2024



Jonathan & Eileen Bouw and kids Lucie (12), Karis (10), Lukas (8) and Kian (8)



Stefan & Kendra Bouw and kids Jaxon (15), Mikaya (13), Alexa (11), Micah (9)



BREEDING BULLS FOR GRASS FARMERS

Welcome to our 2nd Annual Grazer's Edge Bull Sale! We are excited to be able to offer you a high quality set of breeding bulls for grass farmers. We appreciate you taking the time to open this catalog and consider incorporating our genetics into your operation.

Our mission is to improve the quality of life and profitability for our customers. This vision is reflected in our breeding program through a mindset that treats our cow herd like a self-sustaining business. Howrey Angus genetics are not built around systematic dependency of human intervention. Instead they are winnowed by allowing room for them to fail. Nature rewards balance. Nature is not kind to cattle that are propped up with feed and management.

These cows show ROI with a low risk profile. They are low maintenance, are adapted to work in their environment with no heavy dependency on diesel, labor, calving barns or equipment.

We have a simple approach to breeding cattle. Maternal performance traits and reproduction are of the highest importance when it comes down to profitability in the cow calf sector. Because we believe this is true, we have centred our breeding decisions with balance and consistency to ensure we multiply the cattle that have traits like fertility and longevity bred in, not fed in. The genetics you will find in this catalog are the result of this focus where for generations we have stacked proven cow families that have produced well into their teens.

If you have just started to look down this path towards a cow herd that is more self sustaining and you are wondering if its worth the investment to buy Howrey Angus bulls to start the journey in a new direction, ask your self, what is the true costs for your cows dependency on you?

This past summer we had the opportunity to go on two road trips to make new connections and to visit customers that have used our Howrey and Edie Creek Angus bulls across North Dakota, South Dakota and Montana. We want to extend

our thanks to all of you that took the time to visit with us and give us a tour of your operation! It was incredibly valuable for us to get to know you better and get a better understanding of your business and the environment demands you face. If we did not make it to your place this summer but would like us to, please reach out, and we'll work to make it happen!

In 2023 we took the week long Ranching for Profit course. It was an extremely valuable tool for furthering our education and taking a deeper look at the business we run. Inspired by this experience, we want to encourage ranchers to take the course. We are excited to offer 2 Scholarships of \$1,000 each to attend the Ranching for Profit school!!

To enter, all you have to do is head to our website, download the application form, and email it back to us before November 29th, 2024. If you have already taken the course, you are still eligible for the scholarship if you would like to go back for a refresher. Please share this info with anyone who would be interested in this scholarship opportunity! We look forward to seeing the positive impact the RFP school will have on the scholarship winners. Again, our mission is to improve the quality of life and profitability for our customers.

Once again, our Grazer's Edge Bull Sale will be held online only via DVAuction. You are welcome to join us for an open house tour of the bulls on sale day December 4th, lunch will be provided. If a different date would work better for a tour for you, please give one of us a call!

Please head to our website to stay up to date on the sale details and to view videos of all the bulls. With the importance we place on the cows and cow families behind the bulls you are buying, you will find a photo or video of almost every dam of the sale bulls at the end of their sale bull video. If you have any questions about the sale bulls, how to bid online or our breeding program, please do not hesitate to give us a call!

- Stefan Boun

Breeding bulls for grass farmers

GRAZER'S EDGE
online bull sale

DECEMBER 3-4, 2024



HOWREY ANGUS & EDIE CREEK ANGUS HAVE JOINED FORCES!



The History of Howrey Angus and Edie Creek Angus has been intertwined since 2014 when Stefan & Jonathan Bouw first travelled down to Monte Howrey's Vale, SD ranch to meet him in a last-minute rendezvous that almost didn't happen.

Back in 2014, Stefan and Jonathan had already been in pursuit of the best forage-adapted maternal genetics possible for nearly a decade, and had established the Edie Creek Angus cowherd back in Manitoba, which was improving as quickly as the school of hard knocks was handing out lessons.

Throughout the years, we would catch wind of Howrey Angus bloodlines, always having heard good things about them. When we fortuitously met Monte Howrey one late October afternoon on his ranch, we connected and understood that Monte was a breeder who was purely focused on making the best cow possible, and in a replicable manner—for the good of the commercial cow industry. Monte spoke, (among other things,) of a mature herdsire named MH Titan 752, and our interest was piqued!

Stefan tirelessly persuaded Monte that since Titan was already 7, and then 8 years old, he surely could let go of him, and that we could further prove his worth in a different climate. Eventually the export paperwork was done, and Titan immigrated to Manitoba, Canada, where he bred cows until he was 13 years old.

Titan made a very useful cross on our heavily (Traveler) 6807-influenced cowherd, and brought all of the utility of the Emulation line through his sire, OCC Great Plains 943G, along with the stabilized maternal type of his Dixie Erica of CH 1019 granddam and the MH Melisa 357 dam.

In the winter of 2021/2022 Monte approached us with the offer to sell his cow herd to us. We were grateful for the opportunity, so with great excitement we expanded our breeding program by purchasing the Howrey Angus cowherd in Sterling, North Dakota. Monte Howrey has been a great mentor to us and his cattle have adapted & excelled in our low input, maternal-focused Edie Creek Angus herd in Manitoba, Canada.

Our Howrey Angus cow herd is located in Sterling, North Dakota on the Rath Family Ranch. Kip Rath and his family have an excellent maternal commercial cow herd, and our cows live year-round on their ranch. The Rath family are excellent caretakers of the cattle and great stewards of the land, and we are very grateful to be working with them!

Our breeding philosophies have been shaped by Monte and other legendary Angus breeders of grass-type cattle, and we are committed to stay true to the direction Monte has focused on. Our Edie Creek Angus cowherd in Canada has been shaped by Howrey Angus genetics and shares the same goals and selection criteria. These cattle work well in any environment (all across Canada, and from Montana shortgrass country down to Fescue country in the Eastern US), so we see no reason to change their function or phenotype!





Selling: 30 18-Month Old Forage-Developed Angus Bulls

Breeding bulls for grass farmers

GRAZER'S EDGE
online bull sale

DECEMBER 3-4, 2024



Online Auction Hosted by:

DVAuction
Broadcasting Real-Time Auctions

Visit the ranch at Sterling, N.D., anytime to view the bulls

RANCH LOCATION: 1901 327th St. SE - Sterling, ND

CONTACTS

Stefan Bouw.....204-232-1620
Jonathan Bouw.....204-471-4696
Bo Rath, Herdsman.....701-204-3510
Kip Rath, Herdsman.....701-527-0315
Logan Hoffman, DVAuction Rep.....701-388-2618

ON OFFER: 30 18-Month Old Forage-Developed Angus Bulls.

ONLINE ONLY AUCTION FORMAT: Online bidding will be conducted through DVAuction. Bidding opens at 8 a.m. CST on December 3 and closes December 4, 2024, at 7 p.m. CST

OPEN HOUSE: We will host an open house from 10 a.m. until 4 p.m. Wednesday, Dec. 4, 2024. You are welcome to come take a look at the bulls. Lunch, donuts and coffee will be provided.

VIDEOS AVAILABLE ONLINE: Please go to our website, www.HowreyAngus.com, for a link to the videos and the sale.

SEMEN INTEREST: We are selling full possession and 100% semen interest on every bull.

RANCH LOCATION:
1907 327th ST SE - Sterling, N.D.

CONNECT WITH US!

/Eddie Creek Howrey Angus
 /@EddieCrk_Howrey
 HowreyAngusBulls@gmail.com
 www.HowreyAngus.com

ABOUT OUR ONLINE ONLY AUCTION FORMAT

THIS IS A TIMED ONLINE AUCTION!

Bidding opens at 8 a.m., Tuesday, December 3, 2024

BIDDING CONCLUDES WEDNESDAY, DECEMBER 4TH, 2024 . 7:00 P.M. CST

Please go to our website www.HowreyAngus.com for a link to the sale and the videos of the bulls.

HOW THIS ONLINE SALE WORKS: Our Online Bull Sale is scheduled to close at 7:00 p.m. CST on December 4th. All lots for this event will close at the same time. If a bid is placed within 5 minutes of the closing time, closing times for that event will be extended to 5 minutes after that bid. If bidding continues, the sale will stay open until there is a 5-minute stretch with no bidding on any lot. Once there is a full 5 minutes with no bidding on any lot, the whole event will close.

THIS AUCTION IS SCHEDULED TO CLOSE AT 7:00PM ON NOVEMBER 16TH.

EXAMPLE 1: If no bids come in between 6:55 p.m. and 7:00 p.m. , the auction sale is declared closed at 7:00 p.m.

EXAMPLE 2: The auction is scheduled to close at 7 p.m. If a bid comes in at 6:59 p.m., the sale goes into extended bidding. Every lot remains open to bids. If there are no bids on any lot by 7:04 p.m., the whole sale is declared closed at 7:04 p.m.

EXAMPLE 3: The auction is scheduled to close at 7 p.m. and goes into extended bidding. There is a bid on a lot at 6:58 p.m. Every lot remains open to bids. Another bid is placed at 7:02 p.m. Every lot remains open. Another bid is placed at 7:06 p.m. Every lot remains open. If there are not bids on any lot by 7:11 p.m., the whole auction is declared closed at 7:11 p.m.

MOBILE FRIENDLY? Yes, the auction platform and entire site is mobile friendly. So, no matter the device (computer, cell phone, tablet, etc.) you are utilizing to view and/ or bid on an auction, the site is responsive to your screen, so you have the most optimum viewing and bidding experience.

HOW TO CREATE AN ACCOUNT: Go to dvauction.com. Click "Create New Account" Follow the steps by providing the info requested to create a new account and get approval to bid

REGISTER TO BID: Once you have created a new account, or logged into your existing account, visit the Howrey Angus sale page on DV Auction, and click on " Apply for Bidding". Try to do this at least 24 hrs before the bull sale is scheduled to close.

If you have any questions or need assistance with creating an account or bidding, please don't hesitate to call DV Auction Logan Hoffmann at (701)-388-2618.



Scan this with your phone's camera to go directly to our DVAuction sale page for videos and bidding!

TERMS & CONDITIONS

Breeding bulls for grass farmers

GRAZER'S EDGE
online bull sale

DECEMBER 3-4, 2024

BULL DEVELOPMENT: The Bulls have been raised on their mothers milk and grass. They were weaned at the end of December, then brought to the yard where they were fed alfalfa/grass mix hay bales and millet bales. They were not fed any grain, pellets or DDG's.

In May they were turned back out to pasture where the only thing they were offered other than grass was apple cider vinegar, salt and minerals. Its as simple of a feed program as you will find. The bulls are showing their natural fleshing ability on forages only. Feed is not used to cover holes or push to grow. This is done to ensure they are developed and ready for your real world ranch conditions.

If you are a previous customer of Monte Howrey, you can attest that they are developed carefully, to the benefit of their athleticism and longevity. After their first breeding season is complete, they'll look healthier & better than bulls that are fed high energy rations!

THE BULL PROGRAM: -We can keep the bulls until January 1st, 2025, free of charge. Beyond that date, any bulls that remain at the ranch will be charged \$3.50/day. We strongly recommend that you purchase insurance on any bulls remaining at the Rath Family Ranch after the sale. We will do our best to care for the bulls, but we are not responsible for any un-insured injury or death that might occur after the sale and before bulls are delivered. ***\$50 discount on any bulls that you pick up within one week of the sale.***

TERMS: The terms of sale are by cash or cheque. Checks are to be made payable to Jonathan and Stefan Bouw.

PURCHASER'S RISK

Each animal becomes the risk of the purchaser as soon as the Online Bull Sale is closed or finished.

LIABILITIES: All persons attending the sale's open house do so at their own risk and sellers assume no liability, legal or otherwise, for any accidents occurring in or about the premises.

HEALTH: The Bulls have been evaluated for breeding soundness and semen quality by Dr. Jacob Carlson. They have also been vaccinated with Ultrabac 7, Cattlemaster 5, Staybred VL5

GUARANTEE: These bulls have been developed slowly and responsibly. They are not at risk of burning out like you will find with bulls that have been fed for rapid gains.

We cannot cover any bulls for injury or mismanagement. Buy them with the inherent risk in mind that comes with bulls. It is the responsibility of the buyer to insure their bulls if desired. Should your bull fail to be a satisfactory breeder in his first breeding season, we will attempt to make it right on a case by case basis. Howrey Angus is not liable for damages exceeding the bulls purchase price.

INSURANCE: The animal becomes the responsibility of the purchaser as soon as it is sold. You are encourage to buy insurance on your new bulls. Especially if they are going to be staying at the Rath Family Ranch for a significant amount of time.

TRUCKING: For bulls staying in North Dakota, the first 150 miles of delivery is free and the remainder at cost. For bulls leaving North Dakota, we will assist with arranging trucking.

EXPORTING BULLS TO CANADA: If you would like to have the bulls brought up to Edie Creek Angus headquarters in Manitoba, please give us a call before the sale to discuss the costs. Bulls selling to Canada will have extra health work costs. You will be responsible to cover all health costs and to obtain an import permit. We can bring the bulls to the border crossing at Portal, North Dakota at a cost of \$250 USD, but will not cross over the border with the bulls.



WHY BUY HOWREY ANGUS BULLS?

Low input, Forage Based, Maternal Genetics - Focused on creating profit from grass!

Built on a foundation of longevity, we use Herdsires that have dams and grandams that have produced calves well into their teens. The 4 foundation cow families each originate from cows that raised calves until they were at least 14yrs old, with the longest lived being the Shoshone Frances 6357 cow, who died at 18yrs of age. The genetic consistency of the Howrey Angus herd is rare to find, as these time-tested cow families make up the majority of the cow lines in this herd. To read more about the Foundation Cows, see the back inside cover of this catalog. Longevity is a safe bet to ensure fertility & functionality!

How to Make Beautiful Cows: The *Forage-Developed 18-month-old bulls* offered in our annual GRAZER'S EDGE Bull Sale don't look like most bulls offered for sale... These bulls are different! Being forage-fed has equipped them for a long career of breeding cows. They could look more impressive if we fed them harder, but what's the use of buying an over-fed bull that will melt away when it's time to work?? The Howrey Angus cow herd is one of the most feminine & balanced cow herds in the land. Their sons right now aren't over-fed or fitted with fancy haircuts, but if you want to make **fast improvements** in the *function & fertility of your cowherd*, these bulls are the right tool for the job. Our customers have been consistently amazed by the impact Howrey bulls make in the quality of their females in a short period of time. If you want cows like you see in the catalog, these bulls can get you there.

Our cattle are not perfect—however they are bred for a specific purpose. Time and experience have shown that high-value performance & carcass EPD's cannot guide the selection of a functional cowherd in real-world conditions. They are, in fact, antagonistic traits to fertility, longevity and functionality in the cow herd.



MH Admiral 34
AAA Reg#: 18421710
known simply as "MH"
in our pedigrees.

Howrey Angus bulls will sire calves that are born easily & nurse quickly. They will create females that establish an efficient, maternal "Cowherd Factory", from which you can then mate back to maternal bulls to **create high-demand maternal females**, or to Terminal sires to add **hybrid vigor** performance and the "flavour of the day" in hide colour. Doing this will create a functional, long-living cowherd able to wean calves with maximum efficiency in your commercial ranch environment.

Fertility & Longevity - are bred into this cowherd by identifying functional cows that raise calves into their teens with minimal issues on a forage diet. These cows have never been babied or supplemented. They are required to **graze through the snow** in December, and their calves are weaned at the end of December or January. Much talk goes round about **Bonsma principles**, and our Howrey Angus cows meet those criteria with flying colours—they truly are functional females, **STRUCTURED FOR SUCCESS!**

Truly Forage Based - Cows that THRIVE on forages! The Howrey Angus herd was built over 25+ years with an unwavering focus on creating profitable, low input Angus cattle, cows that excel in **maternal performance** traits and have consistently been required to work for a living. They are required to quietly do their job—they need to calve on grass and rebreed on time or else they are shipped. We have tightened the screws on **reproductive longevity** by shortening our breeding season and using multi-sire breeding groups. The cows see bulls for 50 days. There are far too many over-fed and overpromoted cattle that are only functional in a feedlot or show ring. There is no better way of genetically improving a profitable cow herd than requiring them to work with nature. The proof is in cows that **work until their teens** in low input management systems. **Optimization to your environment is a key to profitability.**

Customer Focused: Our mission is to improve the quality of life and profitability of our customers. Cows that work for you, that thrive in the elements. Designed to work in breeding systems that allow you to optimize beef production per acre by providing efficient cows that can be terminally bred to produce marketable calves as needed. Improvement of your profitability means we have been successful.

Minimizing the time, money, and iron you put between a cow and its feed results in profitable businesses: healthier, happier land & people for generations. **Use Howrey Angus genetics as a tool to help you accomplish this!**

HOWREY BULLS ARE BRED WITH GENERATIONS OF:

- FLESHING ABILITY
- FERTILITY
- CAPACITY
- CORRECT FEET
- LONGEVITY
- UDDER QUALITY

- Jonathan Bown

REFERENCE SIRES



Edie Creek Great One 77F

Proven Genetics
STRUCTURED FOR SUCCESS

77F EDIE CREEK GREAT ONE 77F

Reg#: 20955279 Brand:77F Calved: 5/2/2018

O C C GREAT PLAINS 943G
EDIE CREEK GREAT ONE 79Y
O C C JUANADA 737L

O MR BANJO 41147 LOGO
CH GEORGINA 626
CH GEORGINA 369

N BAR EMULATION EXT
DIXIE ERICA OF C H 1019
O C C HEADLINER 661H
O C C JUANADA 856F
BANJO OF WYE UMF 6413
O MISS ALAP L 2246-41
SHOSHONE BALLARD 628 GFAR
MH GEORGINA 619

CE	BW	WW	YW	CEM	Milk	SEN	Fleshing	Udder Rating	Calving Ease
4	0.7	34	56	6	28	17	4	4.5	***

- 77F was an aggressive breeder, he covered 50 2-4yr old cows in the drought of 2021 in our Edie Creek Angus herd with only 3% of them being open—during the worst drought we have ever experienced.
- - He had great slope from hooks to pins, excellent neck extension and hard, tidy feet. His daughters are coming up with some of the best udders we've seen in our Edie Creek herd.
- His Howrey Angus dam was one of our favourite heifers that we brought up to Edie Creek Angus in 2017. Unfortunately we found her over centred in the winter after raising 77F.

696G OCC GOOD MORNING 696G

Reg#: 20007945 Brand:696G Calved: 04/04/2019

O C C MODERATOR 825M
O C C BLUEPRINT 632B
O C C DIXIE ERICA 628W

O C C WORK OF ART 766W
O C C BLACKCAP 973B
O C C BLACKCAP 829W

O C C HEADLINER 661H
O C C DIXIE ERICA 845K
O C C PRACTICAL 841P
CHLOE DIXIE ERICA 7313
O C C GREAT PLAINS 943G
O C C DIXIE ERICA 662J
O C C EUREKA 865E
FCC BLACKCAP LADY 3810

CE	BW	WW	YW	CEM	Milk	SEN	Fleshing	Udder Rating	Calving Ease
11	-1.4	32	55	6	21	19	5	4	*****

- We brought in OCC Good Morning for some added calving ease and fleshing ability. His granddam 628W is one of the best-uddered cows at OCC.
- His dam has raised high selling bulls twice in her career so far for Ohlde Cattle Co. Good Morning 696G is one of them.
- We are using a paternal brother to Good Morning in our Edie Creek Angus Herd up North.

61 MH HULETT 61

Reg#: 18885320 Brand:61 Calved: 2/15/2016

COLE CREEK BLACK CEDAR 46P
COLE CREEK FULL BORE 730
COLE CREEK S G JUMBOLEEN 76P

D H D TRAVELER 6807
MH DIXIE ERICA 113
DIXIE ERICA OF C H 6053

C H QUANTUM 6247
COLE CREEK CLOVA JUANADA 67
HBR ENCORE 0544
COLE CREEK JUMBOLEEN 876
Q A S TRAVELER 23-4
BEMINDFUL MAID D H D 0807
RITO 054 G D A R
DIXIE ERICA OF C H 615

CE	BW	WW	YW	CEM	Milk	SEN	Fleshing	Udder Rating	Calving Ease
9	0.3	36	64	6	25	17	4	5	***

- Hulett is the only walking bull we had that is a direct son of one of the 4 foundation cows. We lost him just prior to breeding season in '24 unfortunately.
- - MH Dixie Erica 113 was 15 when she raised Hulett. Hulett is an athletic, prolific bull that easily covers 50 cows in ND hill country. His daughters are proving to have excellent udders.
- -Monte described 61's dam, Dixie Erica 113 as: "Really feminine, nice headed, long necked, good uddered and good footed with black shiny hard hooves."



MH Hulett 61

REFERENCE SIRES



MH Tank 54

54

MH TANK 54

Reg#: 15358614 Brand:54 Calved: 3/22/2005

CAREER OF WYE
LODGE OF WYE
 LORENA OF WYE

FABRON OF WYE
 CLARICE OF WYE
 PRINCE OF MALPAS
 DEVOTION OF WYE
 D H D TRAVELER 6807
 REVOLUTION ROSE OF R R 9239
 G D A R RAINMAKER 340
 I O U MISS AWESOME 045

O C C BROADSIDE 876B
M H MINA 836
 M O MISS AWESOME 3100

CE	BW	WW	YW	CEM	Milk	SEN	Fleshing	Udder Rating	Calving Ease
7	-0.3	12	20	9	15	28	4	5	***

• Sire, Lodge of Wye, was born in 1963 and is regarded as a structurally sound bull who sired excellent sons and daughters, appreciated in maternal and forage-based programs. Tank's dam is the great MH Mina 836 cow who had better than average fleshing ability.

• We had his full brother MH Tubby 56 breeding in our Edie Creek Angus cow herd in Canada from when he was aged 8-11. Tubby daughters are some of our favorite cows. MH Tank 54 had a little more growth and performance than Tubby did, according to Monte

• Daughters of MH Tank 54 are super broody, deep bodied and fertile, with the classic Bonsma-wedge shape. Progeny have shiny hair coats, demonstrating good hormonal balance.



M H Mina 836



Sinclair Executive 9XV2

714

MH XMAN 714

Reg#: 20696298 Brand:714 Calved: 5/4/2017

N BAR EMULATION EXT V722
SINCLAIR EXECUTIVE 9XV2
 N BAR PRIMROSE Y3051

N BAR EMULATION EXT
 N BAR BLACKBIRD 4307
 N BAR EMULATION EXT
 N BAR PRIMROSE 2429
 COLE CREEK CEDAR RIDGE 1V
 MH FRANCES 720
 O C C HOMER 650H
 MH MELISA 1147

MH
MH MELISA 509
 MH MELISA 357

CE	BW	WW	YW	CEM	Milk	SEN	Fleshing	Udder Rating	Calving Ease
8	-0.2	31	55	4	16	24	4	5	*****

• Xman 714 is an athletic bull, built to cover a lot of ground. 714 often comes back with the most calves sired in a multi-sire breeding group, which indisputably shows great fertility. Xman bred cows for us as a 7yr old bull.

• His dam has two terrific cows close up in her pedigree - Frances 720 and Melisa 357. Melisa 509 resides over in our Edie Creek Angus herd. 714 Comes out of the same cow family as MH Titan 752.

• Rath's have commented the he is a high intelligence bull and easy to work with.



M H Melisa 357

780

MH TURBO 780

Reg#: 16057505 Brand:780 Calved: 4/20/2007

O C C FOCUS 813F
O C C HOMER 650H
 O C C DIXIE ERICA 816B

BASIN RAINMAKER 654X
 DIXIE ERICA OF C H 1019
 D H D TRAVELER 6807
 DIXIE ERICA OF C H 1019
 Q A S TRAVELER 23-4
 BEMINDFUL MAID D H D 0807
 RITO 054 G D A R
 DIXIE ERICA OF C H 615

D H D TRAVELER 6807
MH DIXIE ERICA 113
 DIXIE ERICA OF C H 6053

CE	BW	WW	YW	CEM	Milk	SEN	Fleshing	Udder Rating	Calving Ease
17	-3.1	21	39	10	23	22	5	5	*****

• Pictured is OCC Homer 650H, the sire of MH Turbo 780. Homer is well known for being an easy calving specialist and for leaving special females that perform well in harsh conditions.

• Turbo was an athletic bull that bred 60-70 cows per year until he was 10 or 11yrs old. His daughters are really good footed with dark, shiny hoof. Turbo is a foot and udder improver.

• Dixie Erica 113, the dam of Turbo, was a terrific foundation cow for Howrey Angus. She was 17yrs old when she was sold. All the cows for 4 generations in her maternal down-line raised calves into their teens. She carries the banner of longevity and functionality set forth by great breeders like Dale Davis of the Rollin Rock program and John Hamilton of the Cedar Hills program. Although it is neither flashy nor exciting, the ability to raise calves in a low-input, grass-based system into the teenage years, requires cows that consistently raise average calves.



OCC Homer 650H



MH Dixie Erica 113

SALE BULLS

This cow herd was built with the sole focus of creating **PROFITABLE, LOW-INPUT ANGUS CATTLE**, that excel in maternal performance traits and have always been required to work for a living.

303 HA TURBO 303

Reg#: 20914545 Brand:303 Calved: 5/1/2023

O C C HOMER 650H
MH TURBO 780
 MH DIXIE ERICA 113

COLE CREEK CEDAR RIDGE 1V
MH FRANCES 332
 MH FRANCES 720

O C C FOCUS 813F
 O C C DIXIE ERICA 816B
 D H D TRAVELER 6807
 DIXIE ERICA OF C H 6053
 COLE CREEK BLACK CEDAR 46P
 COLE CREEK CLOVANADA 49S
 O C C GREAT PLAINS 943G
 MH FRANCES 42

Act. BW	76
Age of Dam	10
Born First Cycle?	YES
Fleshing	3
Udder Rating	4.5
Calving Ease	*****

CE	BW	WW	YW	CEM	Milk
14	-1.6	30	54	9	25

- Heifer Bull. There are only two Turbo sons in the sale. This bull has two of the foundation cows right close in his pedigree: 113 & 6357. OCC Homer was an excellent calving ease bull that left some of the nicest cows around.
- A tick more frame than average and a lighter built bull, he will be a bit slower maturing, setting him up well for a long career of making reliable cows.
- Please check out the videos of the bulls online via DVAuction. Most of their videos end with a picture of their dam.

310 HA SOLOMON 310

Reg#: 20914546 Brand:310 Calved: 5/3/2023

SHOSHONE SOLOMON 316
MH SOLOMON 637
 MH DIXIE ERICA 543

MH ROCKE 32
MH FRANCES 852
 MH FRANCES 416

SHOSHONE FRANK 6343
 SHOSHONE FARNCES 6374
 O C C HOMER 650H
 MH DIXIE ERICA 21
 COLE CREEK CEDAR RIDGE 1V
 MH FRANCES 720
 COLE CREEK FULL BORE 730
 MH FRANCES 018

Act. BW	85
Age of Dam	5
Born First Cycle?	YES
Fleshing	3.5
Udder Rating	5
Calving Ease	***

CE	BW	WW	YW	CEM	Milk
6	1.1	34	61	4	21

- Dam of this bull had a really nice udder. The Frances 416 cow is probably the largest capacity/biggest barrelled cow in our herd..!
- Solid built cow bull with a nice blend of Shoshone, OCC and Cole Creek genetics, and a double shot of Emulation through the 018 cow (dam of 416).
- 310 is a good looking bull with good scrotal shape.

“OPTIMIZING PROFIT WITH MATERNAL EFFICIENCY.”

- Darwin Gork



MH Frances 332 • Dam of Lot 303



MH Frances 416 • Maternal Granddam of 310



O C C Good Morning 696G • Sire of 317, 320, 356, 373, 388, 389, 394, 3105, 3108 and 3119

317 HA GOOD MORNING 317

Reg#: 20914549 Brand:317 Calved: 5/5/2023

O C C BLUEPRINT 632B
O C C GOOD MORNING 696G
 O C C BLACKCAP 973B

MH TIGHT BRED 648
MH MELISA 009
 MELISA 512

O C C MODERATOR 825M
 O C C DIXIE ERICA 628W
 O C C WORK OF ART 766W
 O C C BLACKCAP 829W
 MH
 MH FRANCES 018
 O C C NIGHT WATCH 902N
 MH MELISA 311

Act. BW	64
Age of Dam	3
Born First Cycle?	YES
Fleshing	5
Udder Rating	4
Calving Ease	*****

CE	BW	WW	YW	CEM	Milk
14	-3.2	27	46	8	21

- We bought the OCC Good Morning bull to use primarily on 34 and 648 daughters. It looks to be a useful cross. Daughters seem feminine and correct and sons like 317 are stout.
- These Good Morning sons will add fleshing ability and stay athletic. This bull scored really well across the board on our ratings. 317 also has enough linebreeding in his pedigree to be a reliable progenitor.
- The Melisa 311 cow has been an excellent donor dam for Hague Angus. Howrey genetics have been used successfully in registered and commercial cowherds in many environments across the continent!



HA Good Morning 317

“Howrey genetics have produced moderate size females with predictable performance and have corrected udder issues.”

- Joe & Shannon Frite, Beach, ND

319**HA GREAT ONE 319**

Reg#: 20965876 Brand:319 Calved: 5/5/2023

EDIE CREEK GREAT ONE 79Y
EDIE CREEK GREAT ONE 77F
CH GEORGINA 626SHOSHONE FRANZ 419
MH DIXIE ERICA 025
MH DIXIE ERICA 821O C C GREAT PLAINS 943G
O C C JUANADA 737L
O MR BANJO 41 147 LOGO
CH GEORGINA 369
SHOSHONE PIVOT 6159
MH FRANCES 64
MH
MH DIXIE ERICA 946

CE	BW	WW	YW	CEM	Milk
4	0.7	29	47	5	22

Act. BW	77
Age of Dam	3
Born First Cycle?	YES
Fleshing	4
Udder Rating	5
Calving Ease	***

- Build yourself some truly feminine cows with a bull like this! The young 77F daughters in the Edie Creek Angus herd are raising good calves, have excellent udders and are very feminine!
- Dam scores a 5/5 Bonsma rating - she's feminine, ewe-necked, and is built to thrive on forages.
- 319 is long-spined and comes from a long line of great cattle from the Shoshone, Oliver, Emulation and OCC gene pools.



MH Dixie Erica 025 • Dam of 319

320**HA GOOD MORNING 320**

Reg#: 20914550 Brand:320 Calved: 5/6/2023

O C C BLUEPRINT 632B
O C C GOOD MORNING 696G
O C C BLACKCAP 973BO MR BANJO 41 147 LOGO
MH MELISA 918
MH MELISA 726O C C MODERATOR 825M
O C C DIXIE ERICA 628W
O C C WORK OF ART 766W
O C C BLACKCAP 829W
BANJO OF WYE UMF 6413
O MISS ALAP L 2246-41
SHOSHONE SOLOMON 316
MH MELISA 1156

CE	BW	WW	YW	CEM	Milk
13	-2.2	24	39	9	18

Act. BW	64
Age of Dam	4
Born First Cycle?	YES
Fleshing	5
Udder Rating	5
Calving Ease	*****

- A bit smaller framed bull with great capacity. This bull likes to have a bit more personal space but will make excellent range cows.
- We used a maternal brother last year on the Howrey cow herd. The Melisa cow family has been very reliable.
- We are using two bulls out of his Maternal grandam the 726 cow, and great-granddam 1156 was a beautiful Tyson daughter.

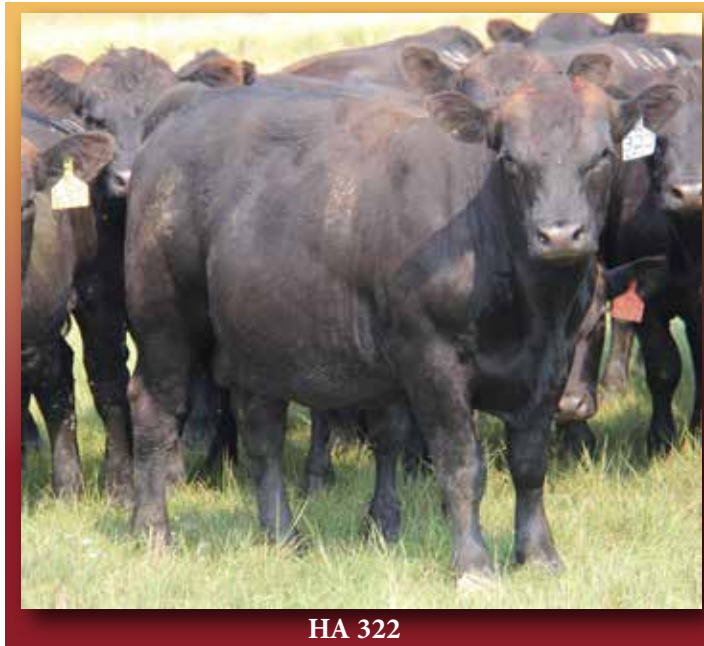


MH Melisa 918 • Dam of 320

MH Melisa 726
Maternal Granddam of 320

Cattle that can graze year-round are a *tool for improving their ecosystem*. Converting low-quality, high-fibre feed from land unsuitable for crop production into high-protein, nutrient dense beef is one of the best equations in modern agriculture.





HA 322

322

HA 322

Reg#: 627696197 Brand:322 Calved: 5/6/2023

Act. BW	87
Age of Dam	
Born First Cycle?	YES
Fleshing	5
Udder Rating	5
Calving Ease	**

PUREBRED ANGUS NT1

CE	BW	WW	YW	CEM	Milk

- Stud! This bull is fully loaded! If you need a changer bull to add fleshing ability and capacity to a set of cows, 322 will do the job. We hope to have DNA results back to determine his sire before the sale. It will be posted on his lot info on the DVAuction Howrey Angus sale page.
- Sold a maternal brother (who was also a stud) last year. His dam has incredible capacity and she passes that on!
- The Howrey Angus gene pool runs deep with consistent cattle that thrive in a wide variety of environments—lush or arid, hot or cold!

Proven Genetics
STRUCTURED FOR SUCCESS

324

HA 324

Reg#: 627696199 Brand:324 Calved: 5/6/2023

325

HA TYSON 325

Reg#: 20914560 Brand:325 Calved: 5/7/2023

PUREBRED ANGUS NT2

Act. BW	69
Age of Dam	
Born First Cycle?	YES
Fleshing	4
Udder Rating	
Calving Ease	

- This bull is another really impressive looking bull, and despite his dam not having been DNA'd successfully in the move years ago, you can bet she's been bred for maternal excellence for generations, and that this bull will be useful.
- We hope to have DNA results back to determine his sire before the sale. It will be posted on his lot info on the DVAuction Howrey Angus sale page.

DDA EMBLAZON 27C
MH TYSON 769
M H MINA 836

MH
MH FRANCES 539
MH FRANCES 426

O C C EMBLAZON 854E
D D A MELISA 824
O C C BROADSIDE 876B
M O MISS AWESOME 3100
COLE CREEK CEDAR RIDGE 1V
MH FRANCES 720
O C C EMBLAZON 854E
SHOSHONE FRANCES 6357

Act. BW	77
Age of Dam	8
Born First Cycle?	YES
Fleshing	5
Udder Rating	5
Calving Ease	***

CE	BW	WW	YW	CEM	Milk
9	-0.2	34	53	5	21

- This could be the hardest bull to let go of. His dam is the perfect wedge shaped cow with an unreal udder, with pinky sized teats as a 9yr old cow this year. His maternal brother sold last year to Todd Orton, Tennessee.
- There won't be many Tyson sons available because he is an AI sire. Trust him to be an udder and fleshing ability improver. All the Tyson daughters we've seen have been easy to look at and long lived.
- Nifty pedigree story here: DDA Emblazon 27C has 3 out of the 4 foundation Howrey Angus cows stacked up close in his pedigree. Frances 6357, Melisa 545 and Dixie Erica of CH 615 (Granddam of MH Dixie Erica 113). The combination of Frances 6357 and Melisa 545 created the DDA Melisa 824 cow who stayed in production for 21 years for DDA.



MH Frances 539 • Dam of 325

334

HA 334

Reg#: Brand: 334 Calved: 5/8/2023

MH HULETT 61 OR MH SOLOMON 637

SHOSHONE FRANZ 419
MH MINA 771
MH MINA 392

SHOSHONE PIVOT 6159
MH FRANCES 64
SHOSHONE BALLARD 628 GFAR
MH MINA 68

Act. BW	77
Age of Dam	7
Born First Cycle?	YES
Fleshing	4
Udder Rating	3
Calving Ease	***

CE	BW	WW	YW	CEM	Milk

- A solid, middle of the road Howrey bull. Structured for success as we say, with generations of maternal cattle backing him up.
- We will have DNA results back to determine his sire before the sale. It will be posted on his lot info on the DVAuction page. He is either sired by MH Solomon 637 or MH Hulett 61.
- Dam is a wedge-shaped cow with lots of Shoshone influence, including the easy-calving 419 bull, two shots of Ferrall 6340, and Ballard. The foundation MH Mina 836 cow anchors this maternal pedigree. 771 has a full sister working in the Edie Creek herd that is doing well at age 8.

This cow herd was built with the sole focus of creating PROFITABLE, LOW-INPUT ANGUS CATTLE, that excel in maternal performance traits and have always been required to work for a living.

DID YOU KNOW...

- **Reproduction** is the most important factor affecting **profitability**.
- Reproduction is 5X more important than growth rate, and 10X more important than carcass quality when it comes to profit.
- Every missed breeding cycle represents a 42 lb loss in weaning weight.
- Body Condition has the greatest impact on reproduction. ("Howrey Angus bulls will sire Easier Fleshing Cows that can hold Body Condition.")
- Thin cows are only half as productive as those in optimum condition



341**HA PONCHO 341**

Reg#: 20914551 Brand:341 Calved: 5/9/2023

O C C ANCHOR 771A
MH PONCHO 4194
 SHOSHONE FRANCES 6357

MH HULETT 61
MH ETTA 825
 K N M ETTA 503

D H D TRAVELER 6807
 O C C JUANADA 709V
 SHOSHONE BALBOA N1702
 SHOSHONE FRANCES 6333
 COLE CREEK FULL BORE 730
 MH DIXIE ERICA 113
 COLE CREEK BLK CEDAR 12V
 K N M ETTA 903

Act. BW	66
Age of Dam	5
Born First Cycle?	YES
Fleshing	5
Udder Rating	4
Calving Ease	★★★★

CE	BW	WW	YW	CEM	Milk
9	-0.8	22	38	8	19

- This is the only Poncho son in the sale. France 2126, the full sister to Poncho, was probably the best Anchor daughter ever in the Howrey Angus herd.
- Poncho is in the very top 1% of the breed with a \$EN of +28, Check out his rib capacity! Quite a bit of Cole Creek breeding in this pedigree too.
- The Etta cow family comes from Keith & Nikki Medalen's excellent maternal cowherd. No messing around there, cows work for a living!



MH Poncho 4194 • Sire of 341

342**HA STERLING 342**

Reg#: 20914552 Brand:342 Calved: 5/9/2023

MH OLIVER 645
MH STERLING 007
 MH MELISA 726

MH TIGHT BRED 648
MH BLACKBIRD 969
 FRANCES 461

O MR CASEY 41-97
 MH WHITNEY 373
 SHOSHONE SOLOMON 316
 MH MELISA 1156
 MH
 MH FRANCES 018
 MH TITAN 752
 MH BLACKBIRD 566

Act. BW	76
Age of Dam	4
Born First Cycle?	YES
Fleshing	3.5
Udder Rating	5
Calving Ease	★★★★★

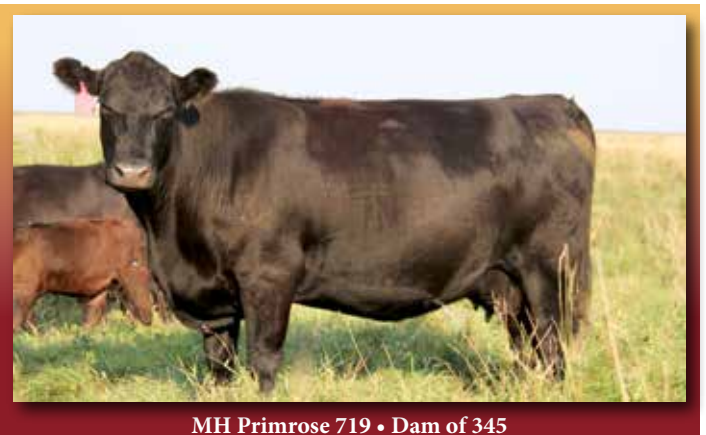
CE	BW	WW	YW	CEM	Milk
10	-1.1	27	47	6	21

- You will find a fair amount of line breeding in his dams pedigree with 4 shots of OCC Great Plains and 5 Shots of OCC Homer. Combining for a total of 14 shots of the great Dixie Erica of CH 1019. Any complaints with how the 969 cow looks? When you add in His sires pedigree, the 342 bull has the Dixie Erica of CH 1019 in his pedigree 18 times!

- This well-built bull has a tick more frame than average. His sire MH Sterling 007 has a very athletic build with great slope from hooks to pins and an attractive Angus head.
- This bull is not flashy in his type, but deep in quality.



MH Blackbird 969 • Dam of 342



MH Primrose 719 • Dam of 345

345**HA HULETT 345**

Reg#: 21057471 Brand:345 Calved: 5/10/2023

COLE CREEK FULL BORE 730
MH HULETT 61
 MH DIXIE ERICA 113

MH ADMIRAL 560
MH PRIMROSE 719
 MH PRIMROSE 507

COLE CREEK BLACK CEDAR 46P
 COLE CREEK S G JUMBOLLEEN 76P
 D H D TRAVELER 6807
 DIXIE ERICA OF C H 6053
 MH
 MH ENVIOUS BLACKBIRD 833
 O C C NIGHT WATCH 902N
 SINCLAIR PRIMROSE 2Y4 9S17

Act. BW	68
Age of Dam	6
Born First Cycle?	YES
Fleshing	4.5
Udder Rating	4
Calving Ease	★★★★★

CE	BW	WW	YW	CEM	Milk
10	-0.7	33	57	7	22

- Little bit of a different pedigree here coming out of the Primrose cow family at Sinclair Cattle Co. 719 dam is long & deep, and her 345 son is a nice, athletic-looking bull.
- We lost the Hulett 61 bull just before breeding season this year, so there won't be very many more of his sons available. Hulett was a very active breeder who was always the dominant bull in his multi sire breeding group. Hulett is an udder improving sire.

348**HA TURBO 348**

Reg#: 20914553 Brand:348 Calved: 5/11/2023

O C C HOMER 650H
MH TURBO 780
 MH DIXIE ERICA 113

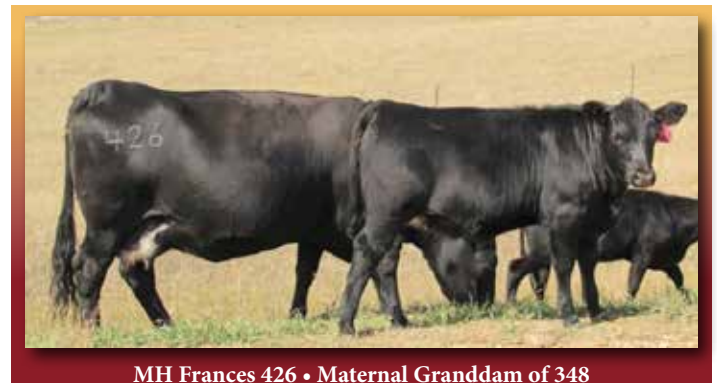
COLE CREEK CEDAR RIDGE 1V
MH FRANCES 253
 MH FRANCES 426

O C C FOCUS 813F
 O C C DIXIE ERICA 816B
 D H D TRAVELER 6807
 DIXIE ERICA OF C H 6053
 COLE CREEK BLACK CEDAR 46P
 COLE CREEK CLOVANADA 49S
 O C C EMBLAZON 854E
 SHOSHONE FRANCES 6357

Act. BW	83
Age of Dam	11
Born First Cycle?	YES
Fleshing	3.5
Udder Rating	3.5
Calving Ease	★★★★★

CE	BW	WW	YW	CEM	Milk
10	-0.1	31	54	5	24

- This bull has a lot of longevity in his pedigree. His dam raised a calf as a 12yr old this year, His maternal grand dams on top and bottom raised calves for 15+ years and then both Maternal Great grand dams were raising calves into their late teens.
- 348 has a little more frame size than the average bull here.
- Cedar Ridge was hard on udders for us. But Turbo was as good a bull as we have used for udder improvement. Udders should be still decent since there's a long line of good uddered Frances cows behind the 348 bull.



MH Frances 426 • Maternal Granddam of 348



Edie Creek Great One 77F • Sire of 354

354

HA GREAT ONE 354

Reg#: 21006140 Brand:354 Calved: 5/13/2023

EDIE CREEK GREAT ONE 79Y
EDIE CREEK GREAT ONE 77F
 CH GEORGINA 626

MH OLIVER 645
MH FRANCES 036
 MH FRANCES 318

O C C GREAT PLAINS 943G
 O C C JUANADA 737L
 O MR BANJO 41 147 LOGO
 CH GEORGINA 369
 O MR CASEY 41-97
 MH WHITNEY 373
 LODGE OF WYE
 SHOSHONE FARNCES 6374

CE	BW	WW	YW	CEM	Milk
5	0	25	39	6	23

Act. BW	76
Age of Dam	3
Born First Cycle?	YES
Fleshing	5
Udder Rating	5
Calving Ease	★★★

- Exceptional cow making pedigree here. We have been tempted to keep this bull back, but we already have a 77F son retained. 354 is thick and deep, and has an amazing cow-making pedigree—his dam is a beautiful Frances cow that is sired by the Oliver 645 bull who has left excellent females, and whose granddam 318 is an embryo mating of the great Lodge of Wye and Frances 6374, the dam of Shoshone Solomon 316 who is one of the best udder improvers we've seen.
- We brought 77F down to the Howrey herd from Canada. Unfortunately he had a short breeding season at Howrey Angus before his career ended. In our Edie Creek Angus herd, 77F left us daughters with extra body length and neck extension. They are functional cows who are fertile and have tidy udders. 77F was a very effective breeding bull.
- The Frances 036 cow is in the top 1% of the \$EN epd. Most of our cattle would fall in the top 1-3% for \$EN. After talking to AAA, we found out that we will need to use Genomic DNA testing to determine the \$EN EPD values for our herd. We will get this done for our 2025 sale.



MH Frances 036 • Dam of 354

FERTILITY DRIVES PROFITABILITY

80% of the bulls this sale were born in the first cycle!

Keeping replacement heifers out of Terminal (growth) bulls that have never been selected for cowherd FERTILITY will steal your chance at optimizing profit—Profitability falls by the way-side when chasing maximum production levels.





MH Frances 906 • Dam of 356



MH Dixie Erica 886 • Dam of 362

356

HA GOOD MORNING 356

Reg#: 20914554 Brand:356 Calved: 5/13/2023

O C C BLUEPRINT 632B
O C C GOOD MORNING 696G
 O C C BLACKCAP 973B

MH TITAN 752
MH FRANCES 906
 MH FRANCES 720

O C C MODERATOR 825M
 O C C DIXIE ERICA 628W
 O C C WORK OF ART 766W
 O C C BLACKCAP 829W
 O C C GREAT PLAINS 943G
 MH MELISA 357
 O C C GREAT PLAINS 943G
 MH FRANCES 42

Act. BW	80
Age of Dam	4
Born First Cycle?	YES
Fleshing	4
Udder Rating	5
Calving Ease	★★★★★

CE	BW	WW	YW	CEM	Milk
10	-0.8	33	56	7	20

- 906 is a full sister to the great Frances 018 cow that is the dam of MH Tight Bred 648. 906 is also the front cover of our sale catalog—a beautiful cow! Her sire Titan 752 went to the Edie Creek herd in Canada at age 8 and worked til he was 13. Titan daughters are now top cows in our Edie Creek Angus herd.
- When you can stack a pedigree tight like you see in the 906 pedigree, and come out with a cow that looks the part like 906 does, you know the genetics work.
- This bull is a little smaller than average in the group. He might not look impressive now, but as other Howrey bull customers have found out, if you see the Howrey cows, you just buy the bulls and wait for form to follow function!

362

HA HULETT 362

Reg#: 20914555 Brand:362 Calved: 5/15/2023

COLE CREEK FULL BORE 730
MH HULETT 61
 MH DIXIE ERICA 113

SHOSHONE FRANZ 419
MH DIXIE ERICA 886
 MH DIXIE ERICA 344

COLE CREEK BLACK CEDAR 46P
 COLE CREEK S G JUMBOLEEN 76P
 D H D TRAVELER 6807
 DIXIE ERICA OF C H 6053
 SHOSHONE PIVOT 6159
 MH FRANCES 64
 MH TITAN 752
 MH DIXIE ERICA 413

Act. BW	82
Age of Dam	5
Born First Cycle?	YES
Fleshing	5
Udder Rating	4
Calving Ease	★★★

CE	BW	WW	YW	CEM	Milk
5	1.2	29	52	3	21

- 362 has a little more power and presence. His dam is very easy fleshing and we sold a son last year as well.
- This bull is double bred to the Dixie Erica cow family, and has a shot of Shoshone and Cole Creek as well as the F0203 bull. With all this and the Titan 752 bull in there, he should improve your cow herd's longevity.

Howrey Angus Genetics are ideally suited to converting solar energy (forages) into dollars (lbs of beef/acre).



Shoshone Franz 419
 Maternal Grandsire of
 319, 334, 362 and 385



MH Melisa 357 • Paternal Great Granddam of 372



MH Frances 951 • Dam of 372

372

HA XMAN 372

Reg#: 21054571 Brand:372 Calved: 5/18/2023

SINCLAIR EXECUTIVE 9XV2

MH XMAN 714

MH MELISA 509

MH TIGHT BRED 648

MH FRANCES 951

MH FRANCES 035

N BAR EMULATION EXT V722

N BAR PRIMROSE Y3051

MH

MH MELISA 357

MH

MH FRANCES 018

MH TURBO 780

MH FRANCES 806

CE	BW	WW	YW	CEM	Milk
9	-0.4	31	55	4	17

Act. BW	81
Age of Dam	4
Born First Cycle?	YES
Fleshing	4
Udder Rating	4.5
Calving Ease	★★★★★

- Heifer bull. His sire Xman 714 has been used to breed heifers until a year ago—he's moderate & athletic enough to do the job even as a mature bull. 714 has often come out on top when we DNA test calves to determine sire, which speaks to his libido and functionality.
- Bottom of the pedigree goes back to Pinebank 152/04 and the Frances 42 cow, who was the dam of the great 720 donor dam!
- Use this Howrey bull on heifers or on a cow herd in which you are looking to moderate frame size & improve maternal traits.

APPLY FOR A SCHOLARSHIP TO THE



Ranching for Profit School

2 SCHOLARSHIPS OF \$1,000 EACH ARE AVAILABLE

After taking the Ranching for Profit School and seeing its value in teaching profitable principles for turning your ranch into a healthy business, we are excited to offer TWO Scholarships of \$1,000 each!

It is our mission to improve the quality of life and profitability of cattle producers. To qualify for your chance to WIN a scholarship, [download the application form](#), fill it in, and email it back to us by **November 29th, 2024**.

Winners will be contacted by December 10th, 2024

This scholarship is sponsored by:



Scan to Apply





MH Everelda 841 • Dam of 373



MH Everelda 850 • Dam of 375

373

HA GOOD MORNING 373

Reg#: 20914556 Brand:373 Calved: 5/18/2023

O C C BLUEPRINT 632B
O C C GOOD MORNING 696G
 O C C BLACKCAP 973B

MH
MH EVERELDA 841
 LIMESTONE DIXIE ERICA Y213

O C C MODERATOR 825M
 O C C DIXIE ERICA 628W
 O C C WORK OF ART 766W
 O C C BLACKCAP 829W
 COLE CREEK CEDAR RIDGE 1V
 MH FRANCES 720
 COLEMAN RAINMAKER 356
 O C C DIXIE ERICA 752T

Act. BW	70
Age of Dam	5
Born First Cycle?	YES
Fleshing	4.5
Udder Rating	5
Calving Ease	★★★★★

CE	BW	WW	YW	CEM	Milk
14	-2.9	29	49	8	22

- Sleep all night heifer bull!
- This is a smooth & attractive Good Morning son out of a beautiful cow. He traces back to the Dixie Erica & Blackcap cow families at OCC, with a shot of the Frances family that makes him distinctly a Howrey bull!
- This bull has a wider flight zone than most. His daughters will be beautiful range cows.

375

HA HULETT 375

Reg#: 20914557 Brand:375 Calved: 5/18/2023

COLE CREEK FULL BORE 730
MH HULETT 61
 MH DIXIE ERICA 113

MH ROCKE 32
MH EVERELDA 850
 MH EVERELDA 517

COLE CREEK BLACK CEDAR 46P
 COLE CREEK S G JUMBOLEEN 76P
 D H D TRAVELER 6807
 DIXIE ERICA OF C H 6053
 COLE CREEK CEDAR RIDGE 1V
 MH FRANCES 720
 O C C MISSING LINK 830M
 LIMESTONE EVERELDA Y1010

Act. BW	83
Age of Dam	4
Born First Cycle?	YES
Fleshing	4
Udder Rating	4
Calving Ease	★★

CE	BW	WW	YW	CEM	Milk
7	0.5	37	66	4	25

- This is a well built, thick Hulett Son. 769 sold a full brother last year to Trey Bloesser. She's a nice feminine cow that goes back to the excellent OCC Pollyanna 944H cow at Ohlde Cattle Co, a donor dam who produced until her mid teens. OCC Practical 841P is also featured lower down in the pedigree, and he is an underrated female producer.
- There is a ton of thickness in this bull, he is an earlier-maturing type of bull that is easy on the eyes. He seems to have taken extra power from his grandsire, Full Bore 730!
- Howrey Angus cattle are developed alongside a commercial herd and are treated the same—no creep feeders, grain or pellets.



MH Mina 7100 • Dam of 385

385

HA XMAN 385

Reg#: 21054573 Brand:385 Calved: 5/21/2023

SINCLAIR EXECUTIVE 9XV2
MH XMAN 714
 MH MELISA 509

SHOSHONE FRANZ 419
MH MINA 7100
 MH MINA 352

N BAR EMULATION EXT V722
 N BAR PRIMROSE Y3051
 MH
 MH MELISA 357
 SHOSHONE PIVOT 6159
 MH FRANCES 64
 MH TITUS 703
 MH MINA 607

Act. BW	78
Age of Dam	6
Born First Cycle?	YES
Fleshing	3
Udder Rating	4
Calving Ease	★★★★

CE	BW	WW	YW	CEM	Milk
5	0.4	27	44	3	16

- 385 has 4 shots of N Bar Emulation EXT. He is also line bred to the Shoshone Frances cow family. You will also find the Shoshone Prudence 6157 cow and the MH Mina 836 cow. There are A LOT of good, proven cows that raised calves into their teens in this pedigree.
- This bull is average or even below average in his muscle development. Don't overlook him. Human nature wants the biggest & best as fast as possible. This bull is average enough that I would put him against any bull in your battery for producing the profitable, low input cow you are aiming for.
- Cattle that are most impressive as 2 and 3 year olds don't typically last. If you want cows that raise calves into their teens, they are slow maturing and typically come into their own as a 4 or 5yr old cow. They really look in their prime as 7 or 8yr old cows. His dam is a good example of this.

“If you want to make small changes, change how you do things, if you want to make big changes, change how you see things.”

- Don Campbell



MH Dixie Erica 089 • Dam of 388



MH Mina 927 • Dam of 389



MH Blackbird 853 • Dam of 391



MH Melisa 357 • Paternal Great Granddam of 391

388

HA GOOD MORNING 388

Reg#: 20962901 Brand:388 Calved: 5/22/2023

O C C BLUEPRINT 632B
O C C GOOD MORNING 696G
 O C C BLACKCAP 973B

MH XMAN 714
MH DIXIE ERICA 089
 MH DIXIE ERICA 848

O C C MODERATOR 825M
 O C C DIXIE ERICA 628W
 O C C WORK OF ART 766W
 O C C BLACKCAP 829W
 SINCLAIR EXECUTIVE 9XV2
 MH MELISA 509
 MH TIGHT BRED 648
 MH DIXIE ERICA 520

CE	BW	WW	YW	CEM	Milk
9	-0.6	31	56	4	19

Act. BW	77
Age of Dam	3
Born First Cycle?	YES
Fleshing	5
Udder Rating	5
Calving Ease	★★★★

- Heifer Bull. 388 is a very nice Good Morning son that is smooth made and will add fleshing ability to a set of calves.
- Dixie Erica 089 has a nice ewe neck and wedge shape. She is also fine boned and feminine structured. Phenomenal balanced cow maker pedigree with Titan, OCC Hunter and the Foundation 113 cow back a couple lines!
- You will find a lot of coarse boned Angus cattle out there that are built for growth. You will also be told they can do all things from top growth to top maternal traits. Do you think that is possible?

389

HA GOOD MORNING 389

Reg#: 21057886 Brand:389 Calved: 5/22/2023

O C C BLUEPRINT 632B
O C C GOOD MORNING 696G
 O C C BLACKCAP 973B

QUALITY CEDAR 600
MH MINA 927
 MH MINA 737

O C C MODERATOR 825M
 O C C DIXIE ERICA 628W
 O C C WORK OF ART 766W
 O C C BLACKCAP 829W
 QUALITY RIGHT TIME 110
 QUALITY JUANADA MIST 4539
 MH
 MH MINA 59

CE	BW	WW	YW	CEM	Milk
10	-0.9	31	54	6	20

Act. BW	69
Age of Dam	4
Born First Cycle?	YES
Fleshing	5
Udder Rating	4.5
Calving Ease	★★★★★

- Another smooth, deep-ribbed Good Morning son that would work on heifers and leave phenomenal daughters in his wake.
- 927 dam is a real beauty as you'll see at the end of the video of 389 on DV Auction. Long, deep, and feminine. Her dam, granddam, and great granddam (age 11) all calved this spring at the Rath ranch at Sterling. This is the definition of a prepotent cow family.
- Mina and Frances cow families represented in the pedigree along with maternal staples in the Angus breed like OCC Homer, Great Plains, Anchor, Shoshone Ferrall 6340, & Leachman Right Time.

391

HA XMAN 391

Reg#: 21054570 Brand:391 Calved: 5/23/2023

SINCLAIR EXECUTIVE 9XV2
MH XMAN 714
 MH MELISA 509

MH TIGHT BRED 648
MH BLACKBIRD 853
 FRANCES 461

N BAR EMULATION EXT V722
 N BAR PRIMROSE Y3051
 MH
 MH MELISA 357
 MH
 MH FRANCES 018
 MH TITAN 752
 MH BLACKBIRD 566

CE	BW	WW	YW	CEM	Milk
10	-0.8	29	53	5	18

Act. BW	79
Age of Dam	5
Born First Cycle?	YES
Fleshing	3.5
Udder Rating	4.5
Calving Ease	★★★★★

- Heifer Bull. His sire bred cows for us this year as a 7yr old bull.
- Xman 714 has a neat pedigree. You will find both the Melisa 357 cow and Frances 720 cow right up close on 391's dams side.
- 391 has two shots of MH Titan 752, 5 shots of OCC Homer.

At Howrey Angus, we are focused on BREEDING MATERNAL GENETICS that are proven to fit a low-input environment and management practices based on MAXIMIZING PROFIT PER ACRE OF GRASS.

394**HA SUNRISE 394**

Reg#: 20914582 Brand:394 Calved: 5/24/2023

O C C BLUEPRINT 632B
O C C GOOD MORNING 696G
O C C BLACKCAP 973BMH TIGHT BRED 648
MH MELISA 0115
MH MELISA 724O C C MODERATOR 825M
O C C DIXIE ERICA 628W
O C C WORK OF ART 766W
O C C BLACKCAP 829W
MH
MH FRANCES 018
SHOSHONE SOLOMON 316
MH MELISA 58

Act. BW	80
Age of Dam	3
Born First Cycle?	YES
Fleshing	4
Udder Rating	5
Calving Ease	★★★★★

CE	BW	WW	YW	CEM	Milk
8	-0.1	29	51	5	20

"Too many people view milk as a maternal trait. I view it as 'anti-maternal'. 'Maternal' is fertility, maternal calving ease, good mothering instinct and survivability. The rancher who develops good cows adapted to a low-input environment, sized right with moderate milking ability and with good hybrid vigor will soon have a high percentage of his/her cows calving in the first 30 days of calving. This rancher can sell a few cows to the rancher who wants to buy replacements, use a terminal cross bull and sell all the calves."

- Burke Teichert

- Heifer Bull. We used this bull to breed our heifers this past summer.
- The dam of this bull had an udder score of 4.5 out of 5 when 394 was born. All of the MH Tight Bred 648 daughters are double bred to Frances 720 and are gems. Fertile, Feminine, with nice udders.
- Shoshone Solomon 316 sires perfect udders and the old F0203 bull and foundation Melisa 545 cow anchor the pedigree – should be some excellent daughters from this bull.

**MH Whitney 86 • Dam of 3105****3105 / HA GOOD MORNING 3105**

Reg#: 20914558 Brand:3105 Calved: 5/31/2023

O C C BLUEPRINT 632B
O C C GOOD MORNING 696G
O C C BLACKCAP 973BMH
MH WHITNEY 86
MH WHITNEY 575O C C MODERATOR 825M
O C C DIXIE ERICA 628W
O C C WORK OF ART 766W
O C C BLACKCAP 829W
COLE CREEK CEDAR RIDGE 1V
MH FRANCES 720
O C C HOMER 650H
MH WHITNEY 2113

Act. BW	70
Age of Dam	5
Born First Cycle?	NO
Fleshing	5
Udder Rating	5
Calving Ease	★★★★★

CE	BW	WW	YW	CEM	Milk
14	-2.7	28	47	9	20

- Smooth, stout Heifer Bull. With a 5 star udder, 5 Star Fleshing and 5 Star Calving. Moderate, Maternal, Easy Calving and Easy Fleshing.
- Some folks ask us what direction we are trying to go with the Howrey herd. The answer is sideways—We are content with producing cows like MH Whitney 86. We will stack cows of this quality in our pedigrees for generations & let the environment sort the ones that work.
- MH Whitney 575 raised calves into her teens. And has had many great daughters and grand daughters. Her Granddaughter Whitney 373 sired by Shoshone Ballard is thriving on Fescue in Virginia at Brooke Miller's Ginger Hill Angus. 373 is also the dam of the MH Oliver 645 bull who has left beautiful daughters in the Howrey herd.



MH Sterling 007 • Sire of 342 and 3107



MH Melisa 486

3107 HA STERLING 3107

Reg#: 21054568 Brand:3107 Calved: 6/1/2023

MH OLIVER 645
MH STERLING 007
MH MELISA 726

MH TITAN 752
MH MELISA 486
MH MELISA 135

O MR CASEY 41-97
MH WHITNEY 373
SHOSHONE SOLOMON 316
MH MELISA 1156
O C C GREAT PLAINS 943G
MH MELISA 357
O C C HOMER 650H
MH MELISA 94

Act. BW	86
Age of Dam	9
Born First Cycle?	NO
Fleshing	4
Udder Rating	4.5
Calving Ease	★★★★

CE	BW	WW	YW	CEM	Milk
7	0.8	30	53	4	21

- Melisa 486 is a sleek & feminine 10-yr old MH Titan 752 daughter. Titan has played a huge role in our Edie Creek Angus herd in Canada. Titan daughters are prime example of cows that can be a bit hard to look at as 2 and 3yr olds, but will blow you away as 5+yr olds when they just thrive.
- Melisa 726 probably is the best uddered cow in our herd. We have retained another son of hers this year (HA Tank 309). You can find a picture of 726 close to the 320 bull in this catalog.
- This bull is line bred to the foundation Melisa 545 cow. It takes years of focused breeding to create a bull with this quality of pedigree.

3108 HA GOOD MORNING 3108

Reg#: 20914561 Brand:3108 Calved: 6/1/2023

O C C BLUEPRINT 632B
O C C GOOD MORNING 696G
O C C BLACKCAP 973B

MH TIGHT BRED 648
MH DIXIE ERICA 848
MH DIXIE ERICA 520

O C C MODERATOR 825M
O C C DIXIE ERICA 628W
O C C WORK OF ART 766W
O C C BLACKCAP 829W
MH
MH FRANCES 018
MH TITAN 752
MH DIXIE ERICA 439

Act. BW	89
Age of Dam	5
Born First Cycle?	NO
Fleshing	4.5
Udder Rating	3.5
Calving Ease	★★★★

CE	BW	WW	YW	CEM	Milk
7	0.6	33	60	3	20

- 3108 is a good 3/4 brother to the 388 Bull. OCC Hunter x foundation Dixie Erica 113 is the base of this pedigree, with Titan bringing in the Melisa cow family, and Tight Bred 648 adding in the Frances line, there's no shortage of reliable Howrey genetics in this pedigree.
- We used OCC Good Morning for a few purposes, one of them being to add fleshing ability. If you are looking to improve your cow herd's fleshing ability, buy one of these Good Morning Sons.
- Not sure where he got the extra BW from, but she probably held him in utero for a little too long.



MH Titan 752 • Maternal Grandsire of 3107

3110 HA HULETT 3110

Reg#: 20946918 Brand:3110 Calved: 6/2/2023

COLE CREEK FULL BORE 730
MH HULETT 61
MH DIXIE ERICA 113

MH TITUS 703
MH DIXIE ERICA 287
MH DIXIE ERICA 7110

COLE CREEK BLACK CEDAR 46P
COLE CREEK S G JUMBOLEEN 76P
D H D TRAVELER 6807
DIXIE ERICA OF C H 6053
O C C GREAT PLAINS 943G
MH FRANCES 2126
O C C GREAT PLAINS 943G
MH DIXIE ERICA 543

Act. BW	78
Age of Dam	11
Born First Cycle?	NO
Fleshing	3.5
Udder Rating	3.5
Calving Ease	★★★★

CE	BW	WW	YW	CEM	Milk
13	-2.4	29	49	9	24

- Hulett 3110 is a good bull that is well equipped to bring forward the genetics of the Dixie Erica cow family that he is linebred to. He is a bit sharper made, but there are enough excellent cows stacked behind him that he will be an excellent cow maker.
- There isn't a better way to ensure improvement in longevity and fertility than by stacking proven, teenage cows like you see in this bulls pedigree.
- Dixie Erica 287 is a 12yr old cow that is the result of half sib mating. Both her sire & dam are sired by OCC Great Plains.

“I was super impressed the first time I saw Monte Howrey’s cows. Attractive cows with really nice feet and udders. Using his bulls really turned my cowherd around, adding consistency in replicating good, intelligent females.”

- Dey Obregewich, Wibaux MT



MH Mina 59



MH Blackbird 717

3117

HA XMAN 3117

Reg#: 21054567 Brand:3117 Calved: 6/6/2023

SINCLAIR EXECUTIVE 9XV2

MH XMAN 714

MH MELISA 509

O C C HOMER 650H

MH MINA 59

MH MINA 352

N BAR EMULATION EXT V722

N BAR PRIMROSE Y3051

MH

MH MELISA 357

O C C FOCUS 813F

O C C DIXIE ERICA 816B

MH TITUS 703

MH MINA 607

Act. BW	87
Age of Dam	8
Born First Cycle?	NO
Fleshing	4
Udder Rating	5
Calving Ease	★★★★

CE	BW	WW	YW	CEM	Milk	Udder Rating	Calving Ease
6	0.8	32	55	2	17	5	★★★★

- 3117 is a 3/4 brother to 385. Mina 59 is a direct daughter to OCC Homer and she carries the fleshing and huge capacity to show it.
- This bull should work as a heifer bull, even though his own personal BW doesn't predict that. Quite likely a long gestation term added birth weight.
- This bull is smaller than our average bull. Use him to reduce frame size. His granddam 352 is going strong at age 11, and has 3 females in the herd including the beautiful 927 cow who is the dam of 389.

3118

HA GOOD MORNING 3118

Reg#: 20914559 Brand:3118 Calved: 6/8/2023

O C C BLUEPRINT 632B
O C C GOOD MORNING 696G
O C C BLACKCAP 973B

MH
MH BLACKBIRD 717

MH BLACKBIRD 918

O C C MODERATOR 825M

O C C DIXIE ERICA 628W

O C C WORK OF ART 766W

O C C BLACKCAP 829W

COLE CREEK CEDAR RIDGE IV

MH FRANCES 720

MH TITUS 703

MH BLACKBIRD 715

Act. BW	82
Age of Dam	6
Born First Cycle?	NO
Fleshing	4.5
Udder Rating	5
Calving Ease	★★★★

CE	BW	WW	YW	CEM	Milk	Udder Rating	Calving Ease
9	-0.7	28	47	6	20	5	★★★★

- Heifer Bull. A nice, moderate bull that will add spring of rib to his offspring, as you can imagine given his parents.
- The Blackbird 717 dam has really good length of body, and maintains a strong top line. She has a nearly perfect udder, and is just a beautiful cow. She descends from a Shoshone Blackbird line, and is line bred to the Frances 6357 cow through her sire "MH" and the Titus 703 bull.
- If you are reading this footnote, you have probably spent a fair amount of time working through our catalog. A HUGE "Thank you" for contemplating our sale offering. Our mission is to improve the quality of life and profitability of cattle producers. We sincerely hope to earn your trust and business with this goal in mind.



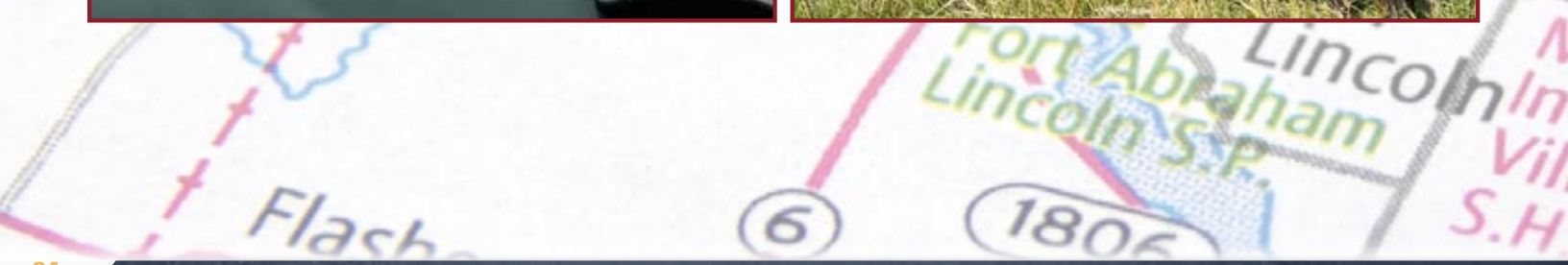
MH Admiral 34
AAA Reg#: 18421710
known simply as "MH"
in our pedigrees.



ROAD *Trip*

This past summer we took two road trips to visit Howrey Angus & Edie Creek Angus bull customers and make some new connections. We toured herds in North Dakota, South Dakota and Montana. Some of the roughest terrain we visited was in the North Dakota Badlands. Certainly rugged country that is not very forgiving.

The focus of our Howrey Angus and Edie Creek Angus breeding programs is the same. Low input, proven, maternal genetics that are bred to work for a living. It was rewarding to see our genetics at work in various environments. We are grateful to our customers and new friends for the experience and wisdom that they shared with us. It was extremely valuable.





THE FOUNDING

Females



MH Dixie Erica 113

MH DIXIE ERICA 113: Dixie Erica of C H 6053 (Dam of 113) was purchased as a mature female (over 11 years of age) with Larry Coleman of Coleman Angus, because of the strength of the cow family behind her. 6053 is a maternal sister to the great Dixie Erica of CH 1019, who was a distinguished foundation cow in the Ohlde Cattle Co. herd in Kansas. If you are familiar with Shoshone pedigrees you may have noticed that Larry Leonhardt used a full brother to Dixie Erica of C H 6053. The Dixie Erica cow line is well known for longevity with many raising calves into their late teens. MH Dixie Erica 113 was the prettiest and most productive of the Traveler 6807 daughters out of the 6053 cow.

We are currently using a 7yr old son of the 113 cow as a Herdsire—MH Hulett 61. Hulett 61 is the last direct natural calf of MH Dixie Erica 113, sired by Cole Creek Full Bore 730. We are also using another 113 son: the MH Turbo 780 bull through AI—Turbo is a calving ease son of OCC Homer 650H. She raised Hulett 61 as a 15-year-old cow. Monte describes her as: Really feminine, nice headed, long necked, good uddered and good footed with black shiny hard hooves.

She was 17yrs old when she was sold. All the cows for 4 generations in her maternal down-line raised calves into their teens. She carries the banner of longevity and functionality set forth by great breeders like Dale Davis of the Rollin Rock program and John Hamilton of the Cedar Hills program.



MH Mina 836

MH MINA 836: The Mina 836 cow was a unique individual who was an outlier in many ways. She was a 3.5 frame score cow that would weigh 1400lbs at the right time of year. She combined exceptional easy fleshing ability while staying very fertile and productive. She maintained a calving interval of 368 day while regularly being an embryo donor and raising her own calf. Mina 836 was highly intelligent, but was also had a peachy temperament, always happy for a scratch. Monte identified her early on as a young heifer that brought beneficial traits that were highly valuable to the gene pool.

MH Mina 836 had a very productive career leaving impactful sons like MH Tank 54 and MH Tyson 769, as well as the MH Tubby 56 who has sired some of our most beautiful cows at Edie Creek Angus in Manitoba, Canada. MH Mina 836 also left beautiful daughters like MH Mina 609. We are currently AI'ing to both MH Tank 54 and MH Tyson 769.

Monte recalls that she was the most productive and easy fleshing cow he has ever had, hands down. Mina 836 also had a very tidy udder and great feet that were hard, black, and shiny. Her calves were high-immunity animals: never sick, they were those shiny-coated, thriving calves that grew quickly. She surely was one of those cows with high butter fat milk and ideal hormonal balance.



DDA Melisa 545

DDA MELISA 545: Monte toured the DDA cow herd in the mid-90s on the recommendation of Fred Saunders to try to find their best cow and bring her home. Monte decided that Melisa 545 was the clear choice. She was a moderate 4 frame cow that weighed 1300lbs. She was a consistent producer, but was not a real heavy milker. Her disposition was good, and she was an attentive mother. Melisa 545 proved to be highly fertile, usually catching on the first try any time she was bred AI.

Melisa 545 ended up also playing a large role in the DDA herd with her daughter DDA Melisa 824 who stayed in production until age 21. The 824 cow had excellent progeny, including DDA Emblazon 27C, and DDA Lodge E5H. DDA Melisa 824 is sired by Shoshone 130-6357, who happens to be a son of the Shoshone Frances 6357 cow.



MATERNAL PERFORMANCE

Cows whose genetic background has focused on increasing size and gain every generation will not produce the most functionally efficient females in a forage-based system.

Having an efficient, moderate maternally-oriented cowherd is an important basis for profitable beef production on grass, especially in a drought scenario when Nature is exerting extreme pressures. This beef-production "Factory" that excels in Maternal traits can be bred to any combination of maternal or terminal sires to produce the kind of calves desired... Maternal performance is measured by more than weights and EPD's:

HARDINESS & REPEATABILITY/CONSISTENCY: We stack proven cows in our pedigrees that have raised calves fault free into their teens. Linebreeding to these cows will bring predictability & uniformity.

FERTILE & FUNCTIONAL: 80% of this year's sale bulls were born in the first cycle. - Their parents are succeeding under the selection pressure we are applying by way of a short breeding season & the competition factor of multi-sire breeding groups.

PASTURE CALVING: Calving on pasture in May without night-checks or close supervision means that calving ease & maternal instincts need to be automatic in our herd.

SOUND & CORRECT: Breeding stock are selected only if they and their ancestors have excellent foot and udder structure.

HIGH STANDARDS: Unless we are in a drought, our heifers are raised on a forage only (no-starch) diet, required to calve at 2 yrs of age, instead of giving them a pass as they're growing. They are only given a 50-day breeding season, which means that the most fertile are given the privilege of becoming cows. Open heifers & cows are culled.

Again, 85% of the 2023 calf-crop were born in the first 30 days of Calving season, and that is done with a cow herd that grazes until the end of December on pasture with their calves at side. They also spend their winter along side a large commercial cow herd, not pampered or coddled.



Shoshone Frances 6357

SHOSHONE FRANCES 6357: Monte considers his friendship with Larry Leonhardt of Shoshone Angus to have been a great privilege. In 1999, in pursuit of the functional, feminine cow that had become his ideal, Monte hand-picked 30 cows out of Larry's herd of roughly 600 cows at the time and one of those cows was the Shoshone Frances 6357 cow. At that time, she was an 11yr old cow. 6357 had already raised 3 herd bulls for Larry that were working in other purebred herds. Despite her prominence within the herd, Larry allowed Monte to choose her out of respect for his goals of creating fertile maternal Angus cows.

Frances 6357 was an angular 1250lb cow at 3.5 frame score, and was a slighter made cow in terms of structure, unassuming perhaps, and not flashy. When she died as an 18yr old cow, she had many excellent daughters, and she herself still appeared as young as an 8-year-old cow: perfect feet and udder—you never would have guessed her age. Her sons and daughters consistently carried/transmitted her qualities: very high udder quality, shiny, hard black feet as well as excellent fertility and longevity.

Quite a few of her daughters raised calves past 15yrs of age. Plenty of longevity. The Frances cow family also consistently demonstrates the high intelligence that the Shoshone gene pool is known for.

We continue to infuse the Frances cow family into the herds through AI with bulls like MH Poncho 4194, MH Titus 703 and Shoshone Solomon 316.

"OPTIMIZING PROFIT WITH MATERNAL EFFICIENCY."

- Darwin Gork

HOWREY ANGUS

32055 5th Ave NE
Sterling, ND 58572

Breeding bulls for grass farmers

GRAZER'S EDGE

online bull sale

DECEMBER 3-4, 2024

30 18-MONTH-OLD ANGUS BULLS

(Pasture-raised with no grain or supplements)

ONLINE SALE HOSTED BY **DVAuction**
Broadcasting Real-Time Auctions

DECEMBER 3-4, 2024

Online Auction Opens Dec. 3 and Closes Dec. 4, 2024 at 7 p.m. CST

Online Auction Hosted by:
DVAuction
Broadcasting Real-Time Auctions



HowreyAngusBulls@gmail.com



www.HowreyAngus.com